

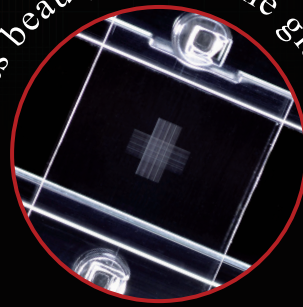


*SMOOTHER than glass!*

*CLEARER than glass!*



*Its beauty excels the glass.*



**Disposable Cell Counting Plate**

**4-Grid**

# Cell Counter Plate

Cost-saving as 4-count per plate.

Better grid linearity & smoothness,  
and lower cost compared with glass plate.

Easy to count due to clear visibility.

Plastic cover film is originally mounted on the plate.

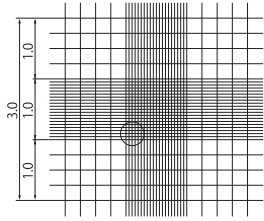
4 Grid patterns are available for choice.

GET IT  
FOUR  
PLATE

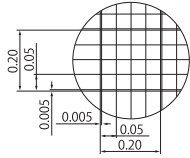
# 4 Grid Patterns

## ■ Neubauer Improved

177-112C

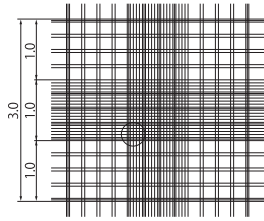


1/10mmdeep, 1/400 & 1/16sqmm

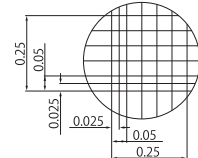


## ■ Burker-Turk

177-212C

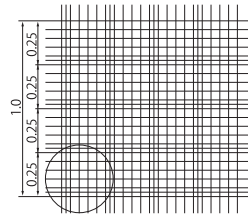


1/10mmdeep, 1/400 & 1/25sqmm

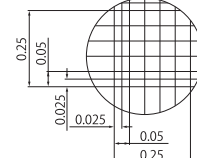


## ■ Thoma

177-312C

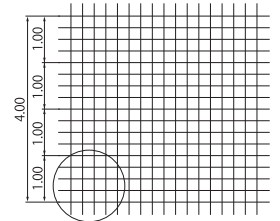


1/10mmdeep, 1/400sqmm

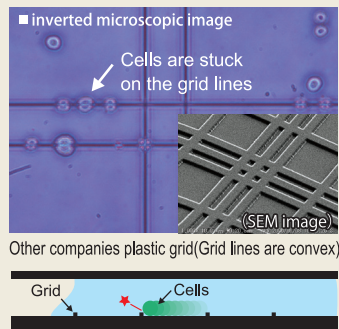
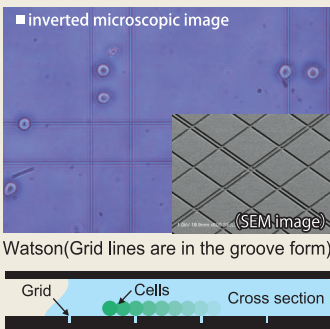
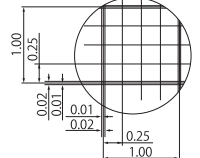


## ■ Fuchs Rosenthal

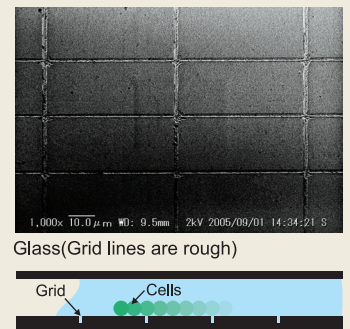
177-512C



1/5mmdeep, 1/16sqmm



Easier to count because cells do not get stuck on the grid lines that are molded in the groove form. Cells are easier to be observed because the grid lines are thinner and smoother than glass slide.



# The ready-mounted plastic cover film provides easy handling

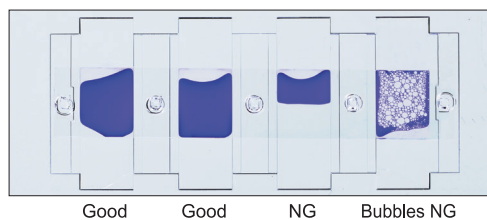
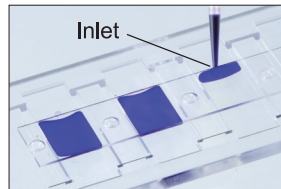
The cover film is originally mounted on the plate and it helps to reduce fluctuation of cell count caused by operator's skill.

### Packaged in a plastic case

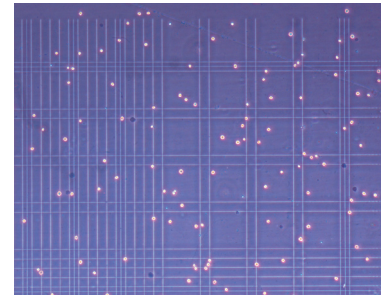
The plastic case prevents damage and stores cell counters safely and cleanly.



① Pipette 6 $\mu$ L of a sample (12 $\mu$ L only for Fuchs Rosenthal) into inlet.



② Set a cell counter on microscope and leave it for 2-3 minutes.



③ Count cells.

④ Calculate using a specified formula.

| Cat.No.  | Item                                  | Packaging                                |
|----------|---------------------------------------|--|
| 177-112C | Cell Counter <b>Neubauer Improved</b> | 10plates/box, 30boxes/units, 5units/case |
| 177-212C | Cell Counter <b>Burker-turk</b>       | 10plates/box, 30boxes/units, 5units/case |
| 177-312C | Cell Counter <b>Thoma</b>             | 10plates/box, 30boxes/units, 5units/case |
| 177-512C | Cell Counter <b>Fuchs Rosenthal</b>   | 10plates/box, 30boxes/units, 5units/case |

Manufactured and sold by:  
**FUKAEKASEI** CO., LTD.

Head Office: 2-2-7 Murotani, Nishi-ku, Kobe  
651-2241, JAPAN  
TEL +81-78-991-4477  
FAX +81-78-991-4491

E-mail: [info@watson.co.jp](mailto:info@watson.co.jp)  
<https://watsonbiolab.com>

Something Different.  
**WATSON** BIO LAB  
MADE IN JAPAN SINCE 1988

※The specification and the price etc. of the product might change without a previous notice.