

Something Different.

**WATSON** BIO LAB  
MADE IN JAPAN SINCE 1988



The glass made slide enhances the image clarity.

# SLIDE & CHAMBER

8well



4well



2well



*Reasonable price*

*Individually sterilized*

*Tight sealing  
with the robust gasket*

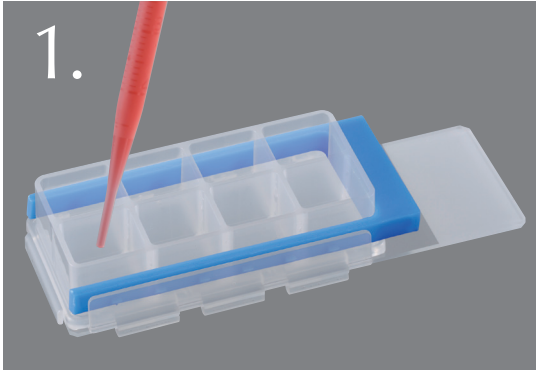
*No adhesive used  
to cause contamination*

*Chemical resistant chamber  
made of polypropylene*

Cat.No	Item	Unit	Case
192-008	Slide and Chamber 8-well <b>sterilized</b>	10 pcs. (individual blister packaging)	25 units
192-004	Slide and Chamber 4-well <b>sterilized</b>	10 pcs. (individual blister packaging)	25 units
192-002	Slide and Chamber 2-well <b>sterilized</b>	10 pcs. (individual blister packaging)	25 units

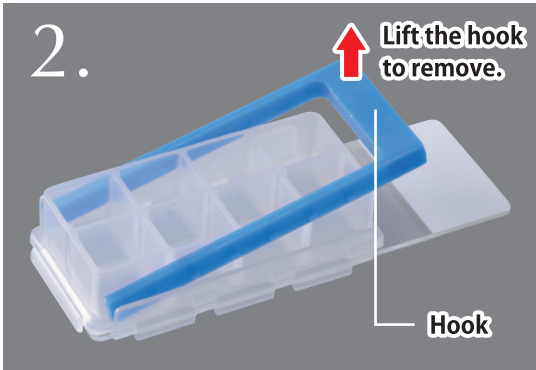
# HOW TO USE

1.



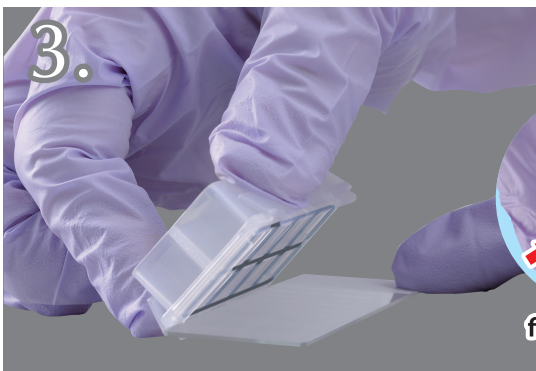
Dispense a sample into wells, place the cover on it, incubate, and immunostain.

2.



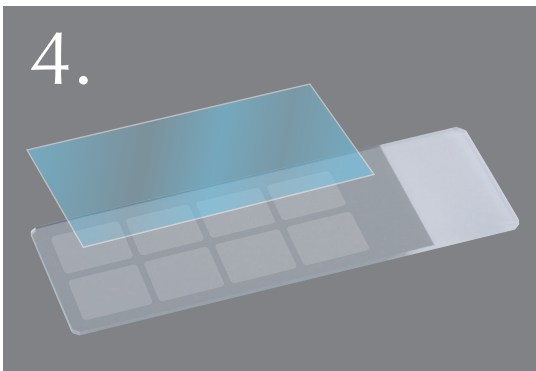
Remove the hook after immunostaining.

3.



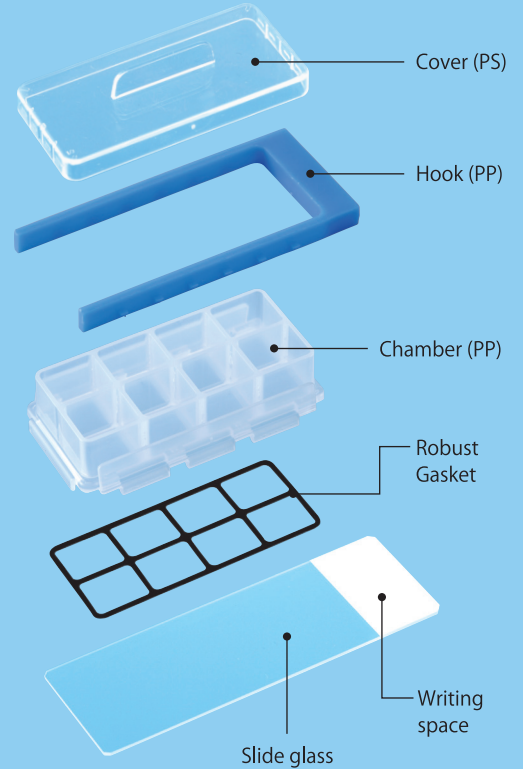
Remove the chamber from the slide glass.

4.

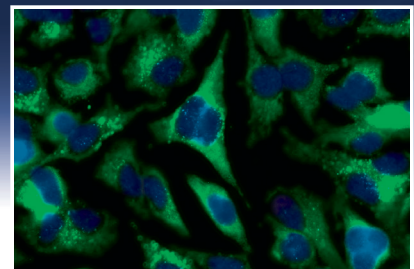


Prepare separately a cover glass (24mm x 55mm) and seal the sample.

No adhesive is used for WATSON Chamber Slide!



**Glass enhances clarity!**



The slide is made of glass and microscopic images are very clear.

Something Different.  
**WATSON** BJO LAB  
MADE IN JAPAN SINCE 1988

Manufactured and sold by:

**FUKAEKASEI** CO., LTD.

Head Office: 2-2-7 Murotani, Nishi-ku, Kobe  
651-2241, JAPAN  
TEL +81-78-991-4477  
FAX +81-78-991-4491

E-mail: [info@watson.co.jp](mailto:info@watson.co.jp)

<https://watsonbiolab.com>

※The specification and the price etc. of the product might change without a previous notice.